



**JP INFOTECH**

SOFTWARE DEVELOPMENT & RESEARCH DIVISION

[www.jpinfotech.org](http://www.jpinfotech.org)

(0)9952649690

Chennai Office : JP INFOTECH, Old No.31,  
New No. 86, 1st Floor , 1st Avenue , Ashok  
Pillar , Chennai - 83.

Landmark : Next to Kotak Mahendra Bank.

Pondicherry Office : JP INFOTECH , #45 ,  
Kamaraj Salai, Thattanchavady, Puducherry  
Landmark : Next to VVP Nagar Arch.

[jpinfotechprojects@gmail.com](mailto:jpinfotechprojects@gmail.com)

## A Secure Cloud server System using Proxy Re-Encryption

### Model

#### ABSTRACT:

A cloud storage system, consisting of a collection of storage servers, provides long-term storage services over the Internet. Storing data in a third party's cloud system causes serious concern over data confidentiality. General encryption schemes protect data confidentiality, but also limit the functionality of the storage system because a few operations are supported over encrypted data. Constructing a secure storage system that supports multiple functions is challenging when the storage system is distributed and has no central authority. We propose a threshold proxy re-encryption scheme and integrate it with a decentralized erasure code such that a secure distributed storage system is formulated. The distributed storage system not only supports secure and robust data storage and retrieval, but also lets a user forward his data in the storage servers to another user without retrieving the data back. The main technical contribution is that the proxy re-encryption scheme supports encoding operations over encrypted messages as well as forwarding operations over encoded and encrypted messages. Our method fully integrates encrypting, encoding, and forwarding. We analyze and suggest suitable parameters



**JP INFOTECH**

SOFTWARE DEVELOPMENT & RESEARCH DIVISION

[www.jpinfotech.org](http://www.jpinfotech.org)

(0)9952649690

Chennai Office : JP INFOTECH, Old No.31,  
New No. 86, 1st Floor , 1st Avenue , Ashok  
Pillar , Chennai - 83.

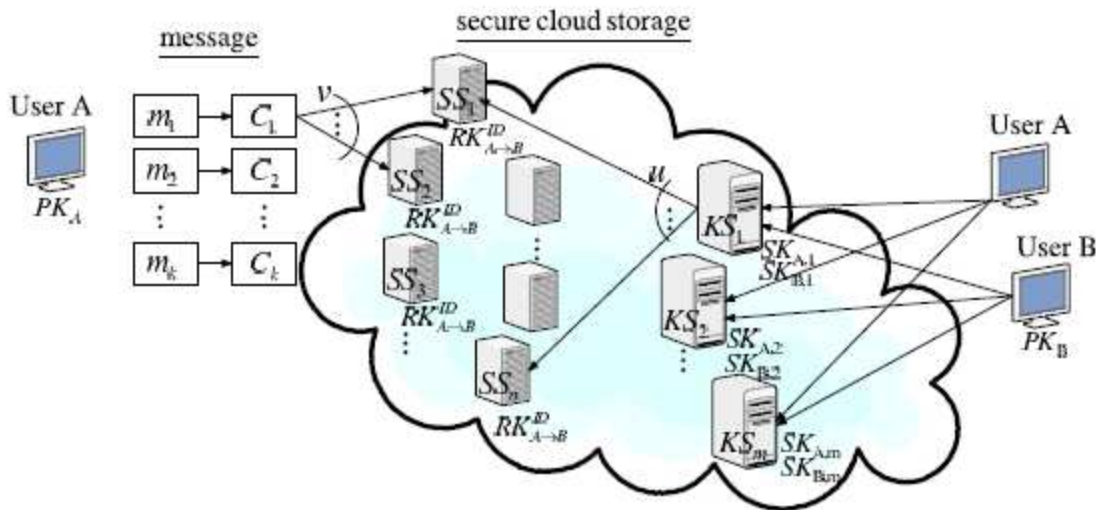
Landmark : Next to Kotak Mahendra Bank.

Pondicherry Office : JP INFOTECH , #45 ,  
Kamaraj Salai, Thattanchavady, Puducherry  
Landmark : Next to VVP Nagar Arch.

[jpinfotechprojects@gmail.com](mailto:jpinfotechprojects@gmail.com)

for the number of copies of a message dispatched to storage servers and the number of storage servers queried by a key server. These parameters allow more flexible adjustment between the number of storage servers and robustness.

## ARCHITECTURE:



## SCOPE OF THE PROJECT:

Designing a cloud storage system for robustness, confidentiality and functionality. The proxy re-encryption scheme supports encoding operations over encrypted messages as well as forwarding operations over encoded and encrypted messages.



**JP INFOTECH**

SOFTWARE DEVELOPMENT & RESEARCH DIVISION

[www.jpinfotech.org](http://www.jpinfotech.org)

(0)9952649690

Chennai Office : JP INFOTECH, Old No.31,  
New No. 86, 1st Floor , 1st Avenue , Ashok  
Pillar , Chennai - 83.

Landmark : Next to Kotak Mahendra Bank.

Pondicherry Office : JP INFOTECH , #45 ,  
Kamaraj Salai, Thattanchavady, Puducherry  
Landmark : Next to VVP Nagar Arch.

[jpinfotechprojects@gmail.com](mailto:jpinfotechprojects@gmail.com)

To provide data robustness is to replicate a message such that each Storage server stores a copy of the message. It is very robust because the message can be retrieved as long as one storage server survives.

The number of failure servers is under the tolerance threshold of the erasure code, the message can be recovered from the codeword symbols stored in the available storage servers by the decoding process. This provides a tradeoff between the storage size and the tolerance threshold of failure servers.

A decentralized erasure code is an erasure code that independently computes each codeword symbol for a message. A decentralized erasure code is suitable for use in a distributed storage system.

A storage server failure is modeled as an erasure error of the stored codeword symbol.

We construct a secure cloud storage system that supports the function of secure data forwarding by using a threshold proxy re-encryption scheme. The encryption scheme supports decentralized erasure codes over encrypted messages and forwarding operations over encrypted and encoded messages. Our system is highly distributed where storage servers independently encode and forward messages and key servers independently perform partial decryption.



**JP INFOTECH**

SOFTWARE DEVELOPMENT & RESEARCH DIVISION

[www.jpinfotech.org](http://www.jpinfotech.org)

(0)9952649690

Chennai Office : JP INFOTECH, Old No.31,  
New No. 86, 1st Floor , 1st Avenue , Ashok  
Pillar , Chennai - 83.

Landmark : Next to Kotak Mahendra Bank.

Pondicherry Office : JP INFOTECH , #45 ,  
Kamaraj Salai, Thattanchavady, Puducherry  
Landmark : Next to VVP Nagar Arch.

[jpinfotechprojects@gmail.com](mailto:jpinfotechprojects@gmail.com)

## **EXISTING SYSTEM:**

In Existing System we use a straightforward integration method. In straightforward integration method Storing data in a third party's cloud system causes serious concern on data confidentiality. In order to provide strong confidentiality for messages in storage servers, a user can encrypt messages by a cryptographic method before applying an erasure code method to encode and store messages. When he wants to use a message, he needs to retrieve the Codeword symbols from storage servers, decode them, and then decrypt them by using cryptographic keys.

General encryption schemes protect data confidentiality, but also limit the functionality of the storage system because a few operations are supported over encrypted data.

A decentralized architecture for storage systems offers good scalability, because a storage server can join or leave without control of a central authority.



**JP INFOTECH**

SOFTWARE DEVELOPMENT & RESEARCH DIVISION

[www.jpinfotech.org](http://www.jpinfotech.org)

(0)9952649690

Chennai Office : JP INFOTECH, Old No.31,  
New No. 86, 1st Floor , 1st Avenue , Ashok  
Pillar , Chennai - 83.

Landmark : Next to Kotak Mahendra Bank.

Pondicherry Office : JP INFOTECH , #45 ,  
Kamaraj Salai, Thattanchavady, Puducherry  
Landmark : Next to VVP Nagar Arch.

[jpinfotechprojects@gmail.com](mailto:jpinfotechprojects@gmail.com)

### **DISADVANTAGES OF EXISTING SYSTEM:**

- ❖ The user can perform more computation and communication traffic between the user and storage servers is high.
- ❖ The user has to manage his cryptographic keys otherwise the security has to be broken.
- ❖ The data storing and retrieving, it is hard for storage servers to directly support other functions.

### **PROPOSED SYSTEM:**

In our proposed system we address the problem of forwarding data to another user by storage servers directly under the command of the data owner. We consider the system model that consists of distributed storage servers and key servers. Since storing cryptographic keys in a single device is risky, a user distributes his cryptographic key to key servers that shall perform cryptographic functions on behalf of the user. These key servers are highly protected by security mechanisms.

The distributed systems require independent servers to perform all operations. We propose a new threshold proxy re-encryption scheme and integrate it with a secure



**JP INFOTECH**

SOFTWARE DEVELOPMENT & RESEARCH DIVISION

[www.jpinfotech.org](http://www.jpinfotech.org)

(0)9952649690

Chennai Office : JP INFOTECH, Old No.31,  
New No. 86, 1st Floor , 1st Avenue , Ashok  
Pillar , Chennai - 83.

Landmark : Next to Kotak Mahendra Bank.

Pondicherry Office : JP INFOTECH , #45 ,  
Kamaraj Salai, Thattanchavady, Puducherry  
Landmark : Next to VVP Nagar Arch.

[jpinfotechprojects@gmail.com](mailto:jpinfotechprojects@gmail.com)

decentralized code to form a secure distributed storage system. The encryption scheme supports encoding operations over encrypted messages and forwarding operations over encrypted and encoded messages.

### **ADVANTAGES OF PROPOSED SYSTEM:**

- ❖ Tight integration of encoding, encryption, and forwarding makes the storage system efficiently meet the requirements of data robustness, data confidentiality, and data forwarding.
- ❖ The storage servers independently perform encoding and re-encryption process and the key servers independently perform partial decryption process.
- ❖ More flexible adjustment between the number of storage servers and robustness.

### **METHODOLOGY USED:**

**PROXY RE-ENCRYPTION SCHEME WITH MULTIPLICATIVE HOMOMORPHIC PROPERTY:**



[www.jpinfotech.org](http://www.jpinfotech.org)

(0)9952649690

Chennai Office : JP INFOTECH, Old No.31,  
New No. 86, 1st Floor , 1st Avenue , Ashok  
Pillar , Chennai - 83.

Landmark : Next to Kotak Mahendra Bank.

Pondicherry Office : JP INFOTECH , #45 ,  
Kamaraj Salai, Thattanchavady, Puducherry  
Landmark : Next to VVP Nagar Arch.

[jpinfotechprojects@gmail.com](mailto:jpinfotechprojects@gmail.com)

In the proxy Re-encryption key the messages are first encrypted by the owner and then stored in a storage server. When a user wants to share his messages, he sends a re-encryption key to the storage server. The storage server re-encrypts the encrypted messages for the authorized user. Thus, their system has data confidentiality and supports the data forwarding function.

An encryption scheme is multiplicative homomorphic if it supports a group operation on encrypted plaintexts without decryption. The multiplicative homomorphic encryption scheme supports the encoding operation over encrypted messages. We then convert a proxy re-encryption scheme with multiplicative homomorphic property into a threshold version. A secret key is shared to key servers with a threshold value  $t$ . To decrypt for a set of  $k$  message symbols, each key server independently queries  $2$  storage servers and partially decrypts two encrypted codeword symbols. As long as  $t$  key servers are available,  $k$  codeword symbols are obtained from the partially decrypted cipher texts.

In order to preserve privacy, the clients will encrypt their data when they out- source it to the cloud. However, the encrypted form of data greatly impedes the utilization due to its randomness. Many efforts have been done for the purpose of data usage but without undermining the data privacy. Homomorphism: Given two cipher texts  $c_1$  and  $c_2$  on plaintexts  $m_1$  and  $m_2$  respectively, one can obtain the cipher text on the plaintext  $m_1 + m_2$  and/or  $m_1 \cdot m_2$  by evaluating  $c_1$  and  $c_2$  without decrypting cipher texts. Proxy re-encryption: Given a proxy re-



**JP INFOTECH**

SOFTWARE DEVELOPMENT & RESEARCH DIVISION

[www.jpinfotech.org](http://www.jpinfotech.org)

(0)9952649690

Chennai Office : JP INFOTECH, Old No.31,  
New No. 86, 1st Floor , 1st Avenue , Ashok  
Pillar , Chennai - 83.

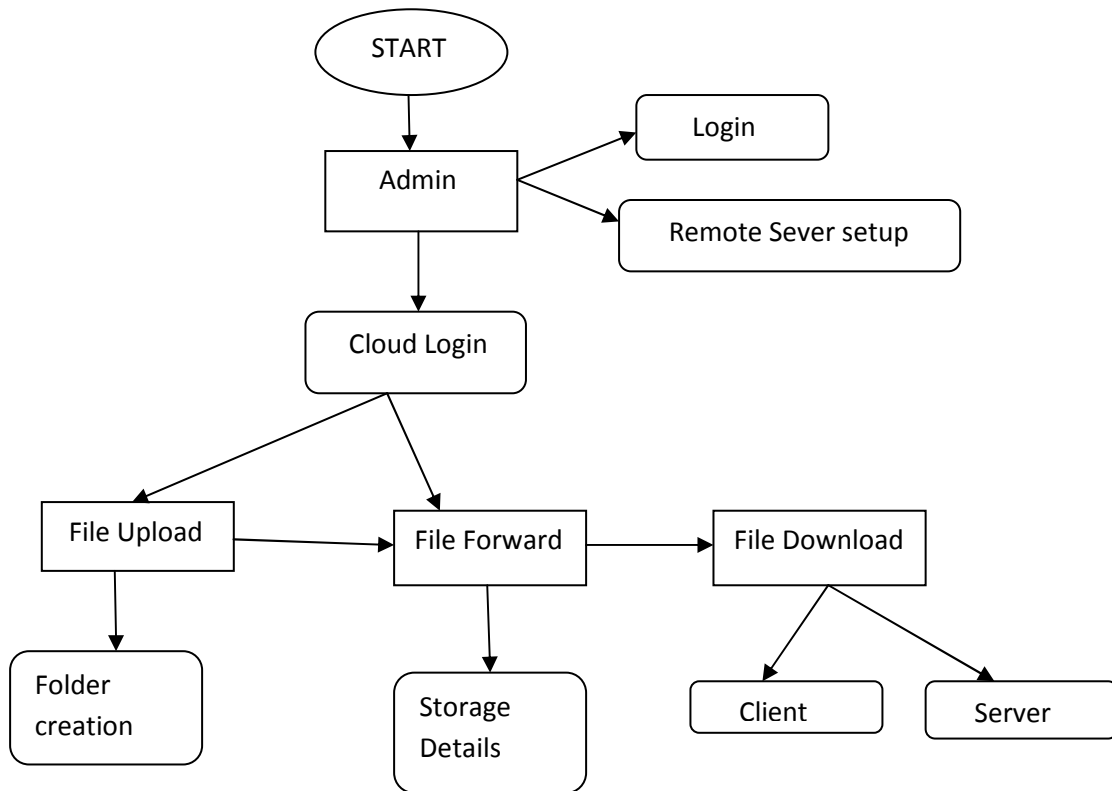
Landmark : Next to Kotak Mahendra Bank.

Pondicherry Office : JP INFOTECH , #45 ,  
Kamaraj Salai, Thattanchavady, Puducherry  
Landmark : Next to VVP Nagar Arch.

[jpinfotechprojects@gmail.com](mailto:jpinfotechprojects@gmail.com)

encryption key, the proxy can transform a cipher text of one user to a cipher text of the target user. Threshold decryption: By dividing the private key into several pieces of secret shares, all clients can work together to decrypt the cipher text – the output of the function.

### DATA FLOW DIAGRAM:







**JP INFOTECH**

SOFTWARE DEVELOPMENT & RESEARCH DIVISION

[www.jpinfotech.org](http://www.jpinfotech.org)

(0)9952649690

Chennai Office : JP INFOTECH, Old No.31,  
New No. 86, 1st Floor , 1st Avenue , Ashok  
Pillar , Chennai - 83.

Landmark : Next to Kotak Mahendra Bank.

Pondicherry Office : JP INFOTECH , #45 ,  
Kamaraj Salai, Thattanchavady, Puducherry  
Landmark : Next to VVP Nagar Arch.

[jpinfotechprojects@gmail.com](mailto:jpinfotechprojects@gmail.com)

## **MODULES:**

- Construction of Cloud Data Storage Module
- Data Encryption Module
- Data Forwarding Module
- Data Retrieval Module

## **MODULES DESCRIPTION:**

### **Construction of Cloud Data Storage Module**

In Admin Module the admin can login to give his username and password. Then the server setup method can be opened. In server setup process the admin first set the remote servers Ip-address for send that Ip-address to the receiver. Then the server can skip the process to activate or Dis-activate the process. For activating the process the storage server can display the Ip-address. For Dis-activating the process the storage server cannot display the Ip-address. These details can be viewed by clicking the key server. The activated Ip-addresses are stored in



[www.jpinfotech.org](http://www.jpinfotech.org)

(0)9952649690

Chennai Office : JP INFOTECH, Old No.31,  
New No. 86, 1st Floor , 1st Avenue , Ashok  
Pillar , Chennai - 83.

Landmark : Next to Kotak Mahendra Bank.

Pondicherry Office : JP INFOTECH , #45 ,  
Kamaraj Salai, Thattanchavady, Puducherry  
Landmark : Next to VVP Nagar Arch.

[jpinfotechprojects@gmail.com](mailto:jpinfotechprojects@gmail.com)

available storage server. By clicking the available storage server button we can view the currently available Ip-addresses.

### **Data Encryption Module**

In cloud login module the user can login his own details. If the user cannot have the account for that cloud system first the user can register his details for using and entering into the cloud system. The Registration process details are Username, E-mail, password, confirm password, date of birth, gender and also the location. After entering the registration process the details can be stored in database of the cloud system. Then the user has to login to give his corrected username and password the code has to be send his/her E-mail. Then the user will go to open his account and view the code that can be generated from the cloud system.

In Upload Module the new folder can be create for storing the files. In folder creation process the cloud system may ask one question for that user. The user should answer the question and must remember that answer for further usage. Then enter the folder name for create the folder for that user. In file upload process the user has to choose one file from browsing the system and enter the upload option. Now, the server from the cloud can give the encrypted form of the uploading file.



Chennai Office : JP INFOTECH, Old No.31,  
New No. 86, 1st Floor , 1st Avenue , Ashok  
Pillar , Chennai - 83.  
Landmark : Next to Kotak Mahendra Bank.

Pondicherry Office : JP INFOTECH , #45 ,  
Kamaraj Salai, Thattanchavady, Puducherry  
Landmark : Next to VVP Nagar Arch.  
[jpinfotechprojects@gmail.com](mailto:jpinfotechprojects@gmail.com)

## Data Forwarding Module

In forward module first we can see the storage details for the uploaded files. When click the storage details option we can see the file name, question, answer, folder name, forward value (true or false), forward E-mail. If the forward column display the forwarded value is true the user cannot forward to another person. If the forward column display the forwarded value is false the user can forward the file into another person. In file forward processes contains the selected file name, E-mail address of the forwarder and enter the code to the forwarder. Now, another user can check his account properly and view the code forwarded from the previous user. Then the current user has login to the cloud system and to check the receive details. In receive details the forwarded file is present then the user will go to the download process.

## Data Retrieval Module

In Download module contains the following details. There are username and file name. First, the server process can be run which means the server can be connected



**JP INFOTECH**

SOFTWARE DEVELOPMENT & RESEARCH DIVISION

[www.jpinfotech.org](http://www.jpinfotech.org)

(0)9952649690

Chennai Office : JP INFOTECH, Old No.31,  
New No. 86, 1st Floor , 1st Avenue , Ashok  
Pillar , Chennai - 83.

Landmark : Next to Kotak Mahendra Bank.

Pondicherry Office : JP INFOTECH , #45 ,  
Kamaraj Salai, Thattanchavady, Puducherry  
Landmark : Next to VVP Nagar Arch.

[jpinfotechprojects@gmail.com](mailto:jpinfotechprojects@gmail.com)

with its particular client. Now, the client has to download the file to download the file key. In file key downloading process the fields are username, filename, question, answer and the code. Now clicking the download option the client can view the encrypted key. Then using that key the client can view the file and use that file appropriately.

## **SYSTEM CONFIGURATION:-**

## **HARDWARE REQUIREMENTS:-**

- ✓ Processor -Pentium –III
- ✓ Speed - 1.1 Ghz
- ✓ RAM - 256 MB(min)
- ✓ Hard Disk - 20 GB
- ✓ Floppy Drive - 1.44 MB
- ✓ Key Board - Standard Windows Keyboard



**JP INFOTECH**

SOFTWARE DEVELOPMENT & RESEARCH DIVISION

[www.jpinfotech.org](http://www.jpinfotech.org)

(0)9952649690

- ✓ Mouse - Two or Three Button Mouse
- ✓ Monitor - SVGA

Chennai Office : JP INFOTECH, Old No.31,  
New No. 86, 1st Floor , 1st Avenue , Ashok  
Pillar , Chennai - 83.

Landmark : Next to Kotak Mahendra Bank.

Pondicherry Office : JP INFOTECH , #45 ,  
Kamaraj Salai, Thattanchavady, Puducherry

Landmark : Next to VVP Nagar Arch.

**[jpinfotechprojects@gmail.com](mailto:jpinfotechprojects@gmail.com)**

## **SOFTWARE REQUIREMENTS:-**

- ❖ Operating System : Windows95/98/2000/XP
- ❖ Application Server : Tomcat5.0/6.X
- ❖ Front End : Java, JSP
- ❖ Script : JavaScript.
- ❖ Server side Script : Java Server Pages.
- ❖ Database : MYSQL